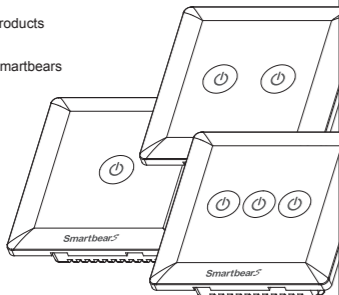


# eTOUCH

## Wireless Control Single Live Wire Wall Switch - 1/2/3 Gang Single Control

### Installation Instructions

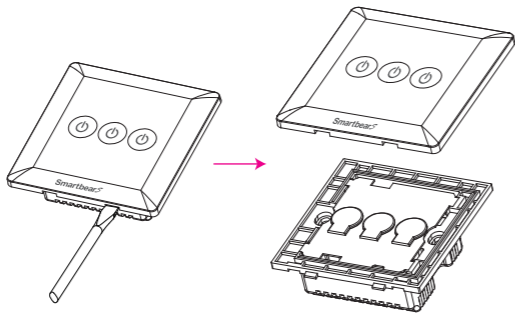
Smartbears Wireless series of products must be used with ePatron, you can add more than one of Smartbears products to a single ePatron



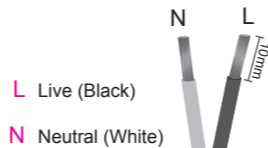
**!** Caution: Turn off power before proceeding

Install and disassembly instructions is based on the Triple Gang switch as example

**1** Use a flat head screw driver to pry off the cover plate in preparation for installation



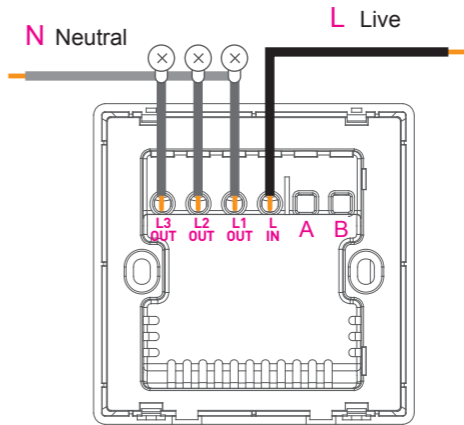
**2** Prepare and strip the power wires that leads to the lights to be control.



L Live (Black)

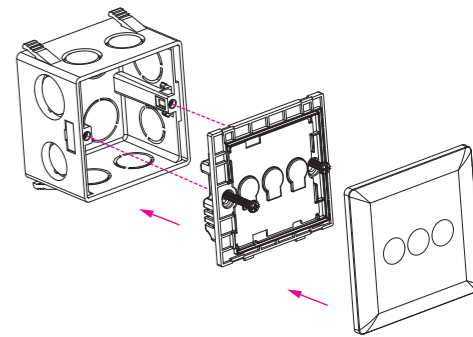
N Neutral (White)

**3** Loosen the connector screws  
Connect power wires to the appropriate connectors and tighten the connector screws to secure.



\* Please refer to the actual product to install.

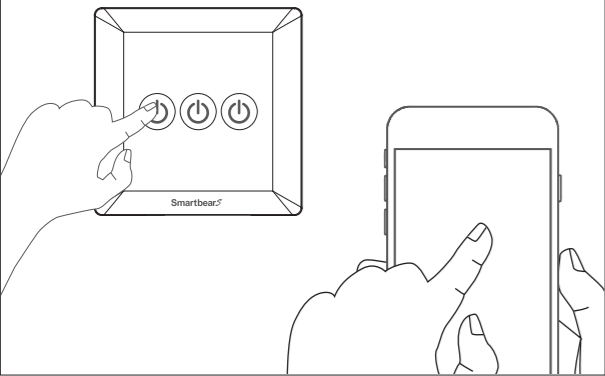
**4** Screw the Wall Switch on to the wall socket box and install the cover plate.



Turn power back on to complete installation.

**5** Use mobile devices to control the Wall Switch remotely or use the touch button on the Wall Switch to control manually.

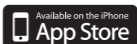
Caution: This product has a maximum power load of 1000W (5A) per gang and a maximum total power load of 2000W (10A) per switch  
**DO NOT OVERLOAD.**



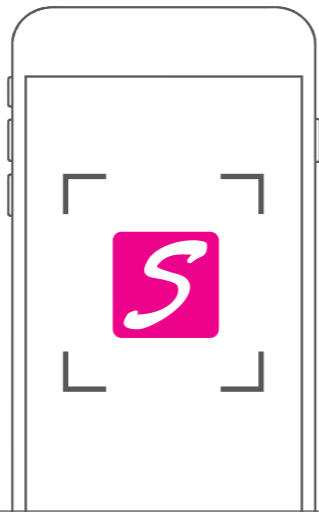
**6** Scan the QR Code to download Smartbears APP



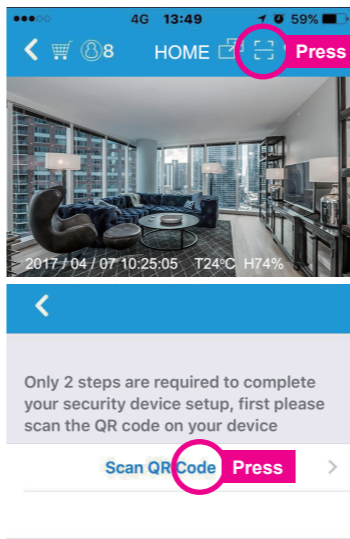
Support Android 4.1 and above



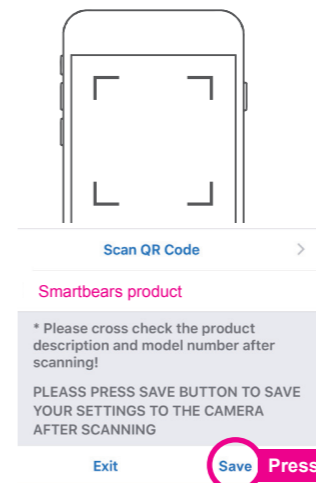
Support iOS 8 and above (iPad/iPhone/iPod)



**7** Add Device



Scan the Product QR Code to Add Device



Please scan the following QR code to download detailed Smartbears APP user manual

