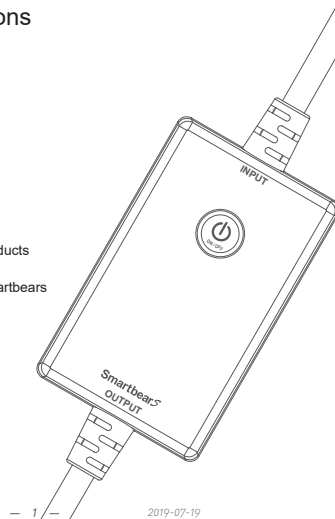




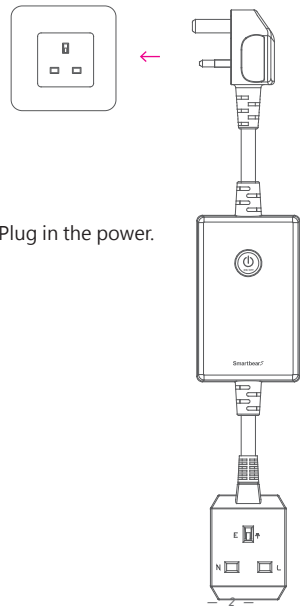
Wireless Control In-Line Switch (15A) - UK Type

Installation Instructions

Smartbears Wireless series of products must be used with ePatron, you can add more than one of Smartbears products to a single ePatron

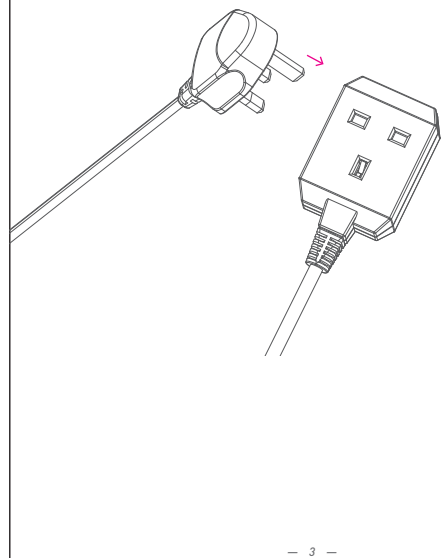


1 Wireless Control In-Line Switch installation instructions

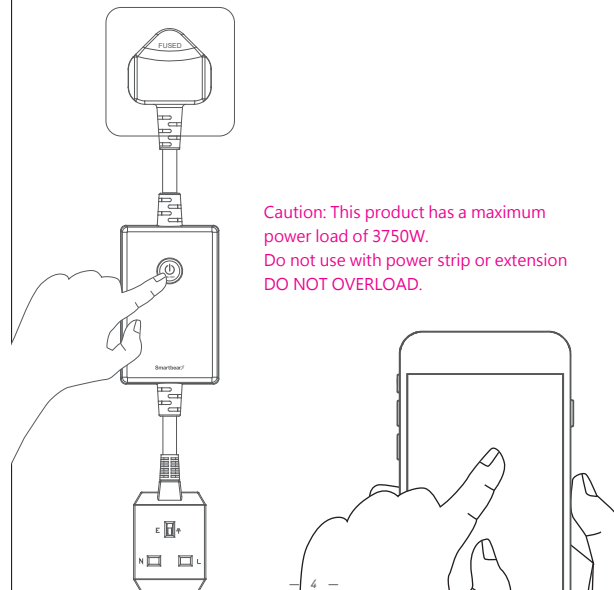


Plug in the power.

2 Plug appliance to be control into the Smart Plug



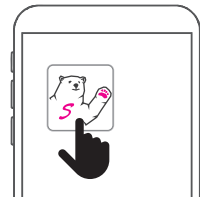
3 Use mobile devices to control the Smart Plug remotely or use the touch button on the Smart Plug to control manually.



Caution: This product has a maximum power load of 3750W. Do not use with power strip or extension DO NOT OVERLOAD.

4 Add Device

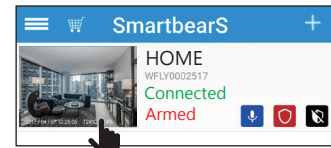
Open "Smartbears" app. at your mobile as below:



Notes: Smartbears series products should be attached with Smartbears hub, you can control different devices in one ePatron. Please refer to the user manual for the hub and App.

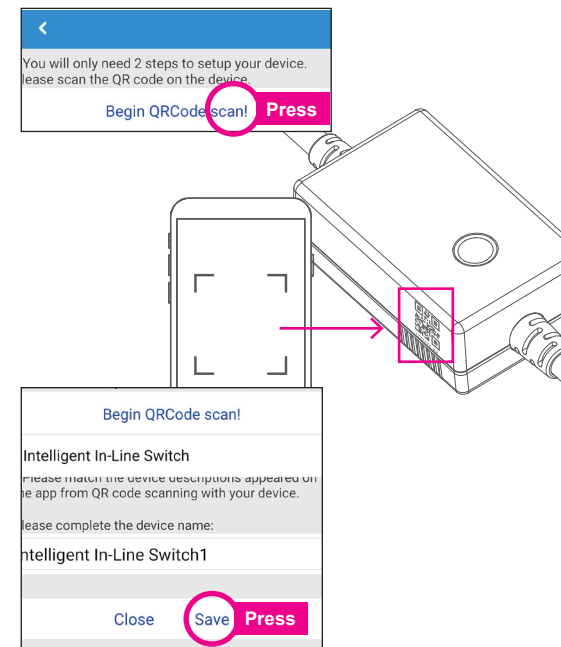
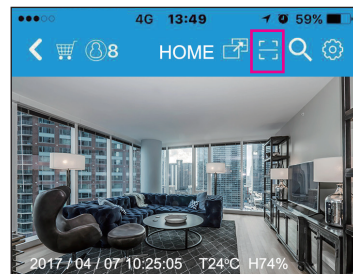
! Please make sure the power is on, or it won't work if not.

Enter the Smartbears App and the Hub list



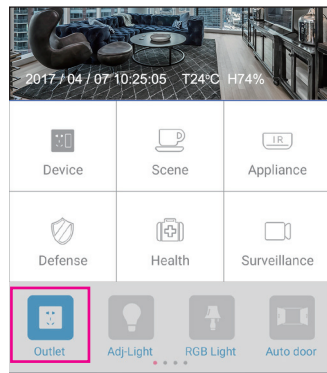
After the hub connected successfully, chose the hub you want to add the device

Scan the Product QR Code to Add Device



5 Switch control

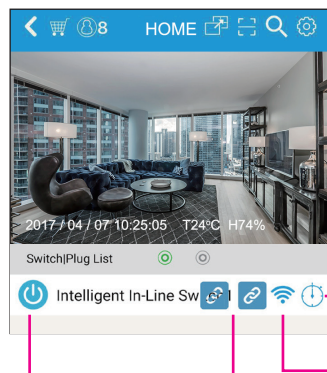
After added device, return the main window



→ Choose the Outlet

Select Outlet- then click the added device-in line switch, then you can remote control switch and different home appliances, including manual operation switch, auto control, timing control, Scene combination.

In the interface of "SwitchPlug List", click different button to operate:



Turn on/off the power

Scene mold setting
Blue button will change with different scene

Switch name/area
timing setting,
deleting etc.

Wifi status



Please scan the following QR code to download detailed Smartbears APP user manual



FCC statement

This device complies with Part 15 of the FCC Rules. Operation is subject to the following two conditions : (1) This device may not cause harmful interference, and (2) this device must accept any interference received, including interference that may cause undesired operation.

Caution : Changes or modifications not expressly approved by the party responsible for compliance could void the user's authority to operate the equipment.

NOTE : This equipment has been tested and found to comply with the limits for a Class B digital device, pursuant to part 15 of the FCC Rules. These limits are designed to provide reasonable protection against harmful interference in a residential installation. This equipment generates, uses and can radiate radio frequency energy and, if not installed and used in accordance with the instructions, may cause harmful interference to radio communications. However, there is no guarantee that interference will not occur in a particular installation. If this equipment does cause harmful interference to radio or television reception, which can be determined by turning the equipment off and on, the user is encouraged to try to correct the interference by one or more of the following measures:

- Reorient or relocate the receiving antenna.
- Increase the separation between the equipment and receiver.
- Connect the equipment into an outlet on a circuit different from that to which the receiver is connected.
- Consult the dealer or an experienced radio / TV technician for help.



WellShin Store



Taiwan

China