



Well Shin Technology

GO NOW



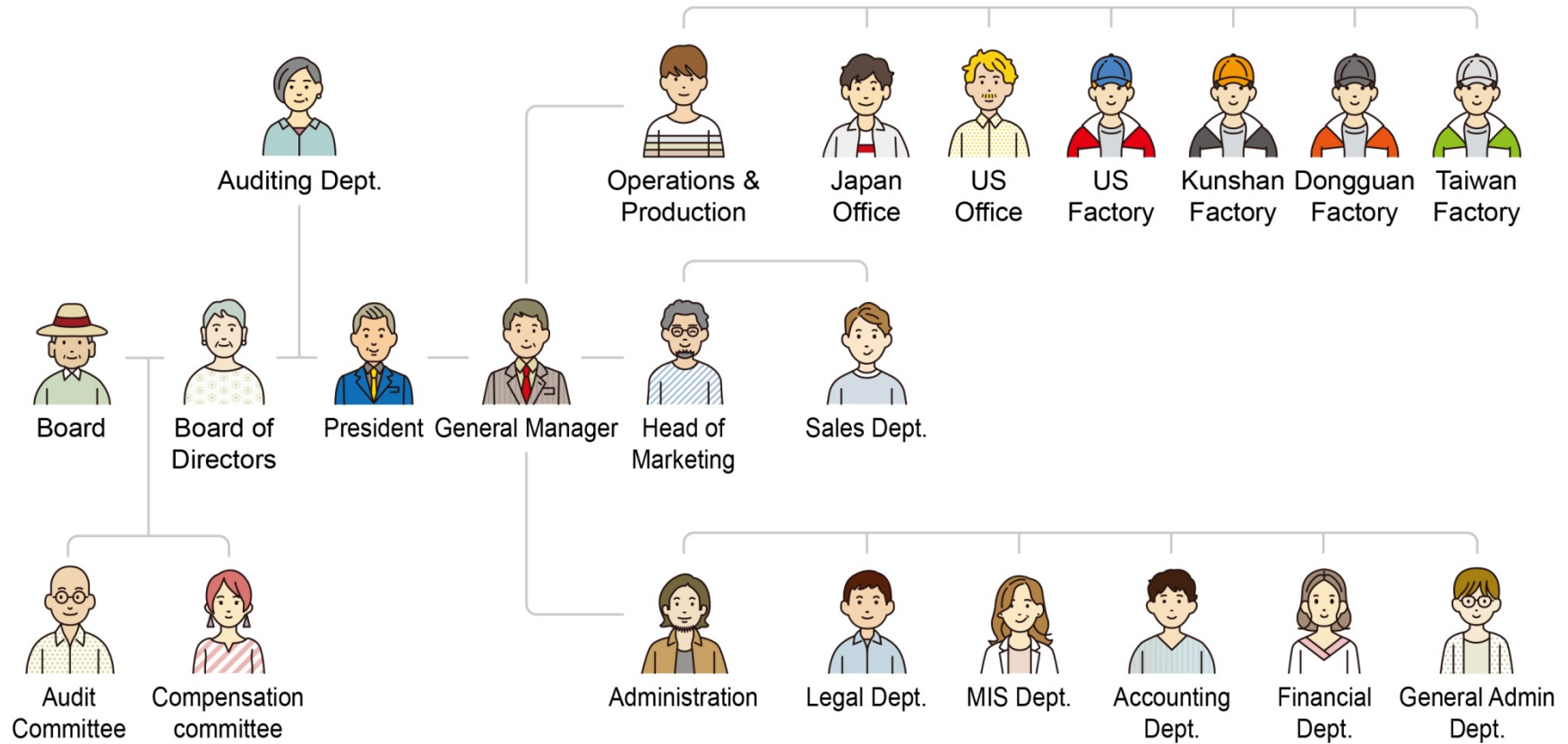
EV Charger 、 IoT Home Automation 、
AC / DC Power Charger 、 AC Power Cordset

Well Shin History

- | | |
|--|---|
| <u>2007</u> ▶ Well Shin published in Taiwan Stock Market (TSM : 3501) | <u>2008</u> ▶ Well Shin Japan (ウェルシンツァパソ) established |
| <u>2005</u> ▶ Conntek / Cisco / Well Shin Electric Kunshan established | <u>2011</u> ▶ Dongguan Plugo Electric (Plugo Private Brand) established |
| <u>2003</u> ▶ Well Shin Electronic Kunshan established | <u>2013</u> ▶ Louisville Kentucky, USA production line established |
| <u>2002</u> ▶ Enterprise reorganized into Well Shin Technology | <u>2015</u> ▶ SmartBears and JDB Brand Series established |
| <u>1999</u> ▶ Chang Hwa, Taiwan Factory established | <u>2023</u> ▶ WSIC established
GE Appliance recognition of Well Shin Technology
Excellent Performance in Quality 'Distinguished Supplier' |
| <u>1993</u> ▶ Dongguan Well Shin Factory established | <u>2024</u> ▶ Well Shin Electronic Vietnam established |
| <u>1986</u> ▶ Well Shin Enterprise established | <u>2025</u> ▶ Well Shin Taiwan Taipei Factory established |



Organization Chart



Business Philosophy



Customer Satisfaction



**Generating Profit for
Shareholders and Increasing
Tax Revenues**



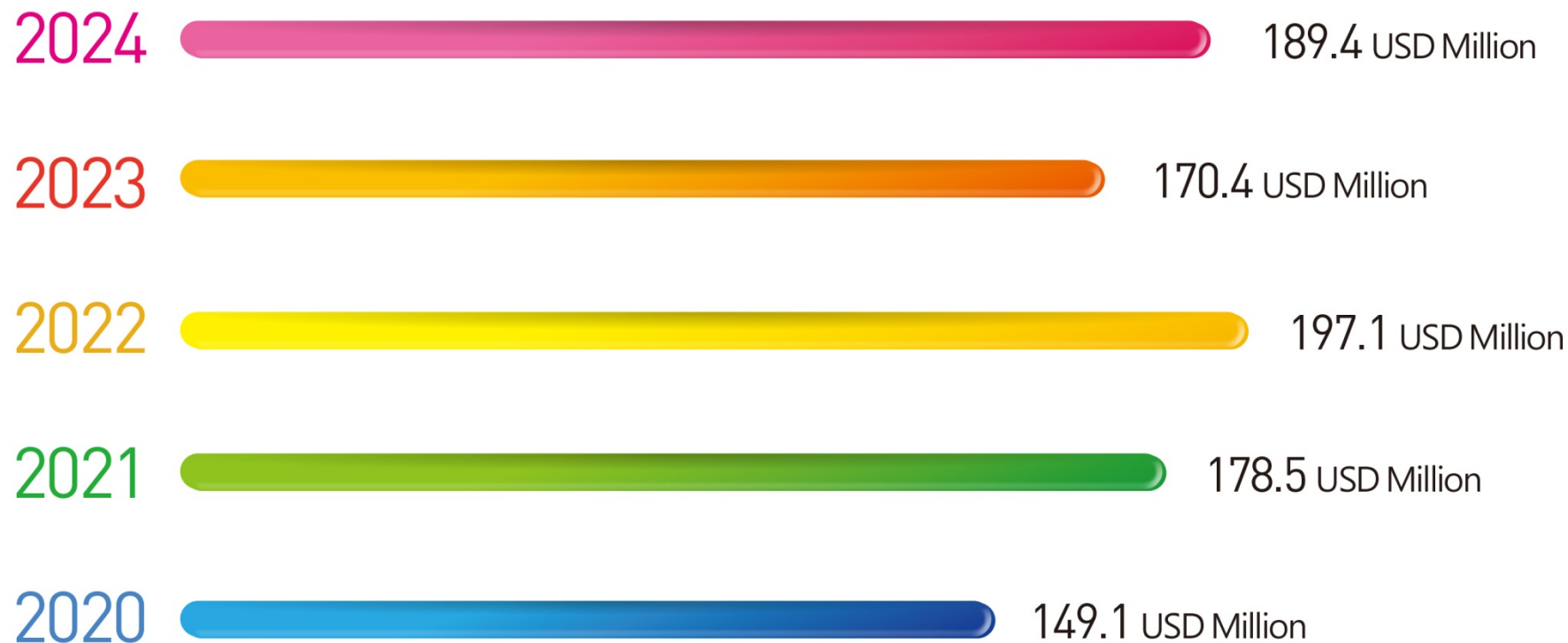
**Harmony between Labor
and Capital, Benefits Sharing**



**The company abides by laws
and regulations, fulfilling
social responsibilities**



Revenue



Worldwide Location



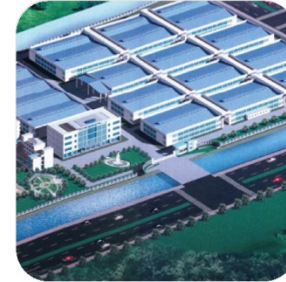
Headquarter

Taipei, Taiwan
Floor Area: 7,225m²
Employees: 50



Factory

Dong Guan, China
Area: 77,731m²
Production Lines: 84
Employees: 1,000



Factory

Kun Shan, China
Area: 72,898m²
Production Lines: 60
Employees: 900



Factory

Chang Hwa, Taiwan
Area : 18,582m²
Production Lines : 18
Employees : 200



Factory

Louisville Kentucky, USA
Area: 4,638m²
Production Lines: 7 (Plan)
Employees: 100 (Plan)



Factory

Da Nang, Vietnam
Area : 18,382m²
Production Lines: 47 (Plan)
Employees : 1,000 (Plan)



Factory

Taipei, Taiwan
Area : 3,532m²
Production Lines: 7 (Plan)
Employees : 100 (Plan)

Factory : Chang Hwa Taiwan, Dongguan, Kunshan, Louisville

Office : Taipei, Dongguan, Kunshan, Japan, San Jose (CA), Milwaukee (WI), Louisville (KY), Tennessee (TN)

Hub : San Jose (CA), Milwaukee (WI), Franklin (WI), Louisville (KY), Indiana (IN)

Co-Partner : Quail



© Well Shin All rights reserved.

Major Industrial Production and Processing



AC/DC Power IoT Product



Wire & Cable Production



Cable Assembling



Tooling Development



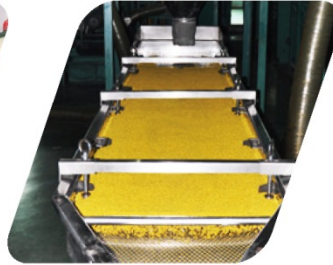
Hardware Stamping



Injection Molding



Rubber Kneading



PVC Pellet



Custom Design



Quality Control Capability



Approval & Management Capability



Service / Supply Capability



Vertical Integration



R&D Capability



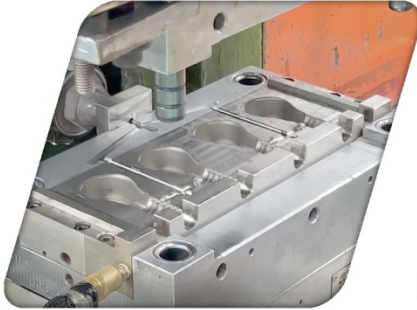
Product Variety



© Well Shin All rights reserved.

Vertical Integration of Inhouse Material Supply

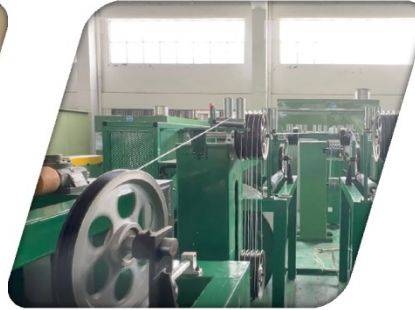
Tooling Supply



Plastic Injection Parts



Cable Production



Wire Parts



Metal Stamping Parts



TPE HF Pellet



PVC Pellet



Rubber Sheet



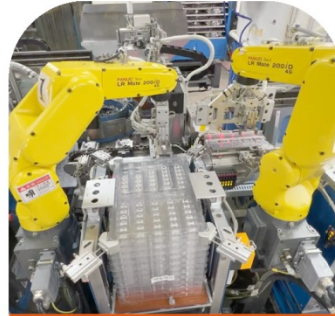
Production Line



Plastic Injection



Parts



Automated production
line for AC Adapter



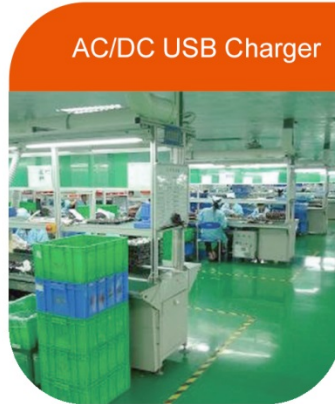
Car Charger



Automated production
line for AC Cord Set



Electronic Product



AC/DC USB Charger



Wiring Harness Assembly



Quality Policy

Well Shin obtained the ISO 9001, ISO / IATF16949 quality management in line with the company's business philosophy. Through the internal quality control and great service to meet customer satisfaction.

Meet the relevant requirements of ACT in line with

- Worldwide Safety Standards
- MSDS – Material Safety Data Sheet
- Quality Control Plan
- APQP – Advanced Product Quality Planning
- SPEC, SIP, SOP, Reliability Test
- 4P Management (Design / Tooling / Pilot Run / Mass Production)



Environmental Protection Policy

To meet the ISO 14001 Environmental Management requirements and RoHS, REACH standard in line with the company's business philosophy.



ICP-AES
Measure the Concentration of Metal Ions.
(Inductively Coupled Plasma with Atomic
Emission Spectroscopy)



GCMS-QP2010
Organic Material Analysis
(Gas Chromatograph Mass Spectrometer)



XRF
Toxic Heavy Metal Analysis
(X-ray Fluorescence)



Deed and Award



- ISO 27001 Information Security Management System Certification
- GE Appliance recognition of Well Shin Technology Excellent Performance in Quality 'Distinguished Supplier'
- Ranked No. 515 on CommonWealth Magazine list of Top 2000 Manufacturing 2023
- Certified to ISO/ IATF16949 Quality Management Systems for Automotive Industry
- Certified to ISO9001 Quality Management System (QMS)
- Certified to ISO14001 Environmental Management Systems (EMS)
- Be awarded the Safety Management Standards Certificate
- Interviewed by CCTV at Dongguan Factory about Production Automation.
- Signed a Memorandum of Understanding on joint R&D Program on Electric Vehicle W/ ITRI
- President JS WU - Be awarded the 2010 IIP (International Inventor Prize)
- Be awarded the GE Distinguished Supplier
- Be awarded the Special Tax Contribution
- Passed the Guangdong "Injection Molding Production Automation" evaluation
- Be awarded the Dongguan Top 100 Information Industry
- Be awarded the China High Technology Enterprises Certificate
- Obtained approved supplier code of HP and Thomson (Technicolor)



© Well Shin All rights reserved.

Well Shin Products



Infrastructures



Motor Vehicle



Data Center



Industrial Equipments



Home Appliances



Aerospace



Consumer Electronic



Electric Vehicle Connector

IoT Home Automation

Locking Cord

Wiring Harness

(Automobiles, home appliances, new energy)

PDU Power Distribution Units

Power Adapter

Socket

AC/DC USB Charger

CLA

AC Power Cord Set

Hardware & Terminal

PVC/ Rubber/ HF Cable

Transportation Connector



© Well Shin All rights reserved.

Private Brand - SmartBears



Smartbears is a Smart Home solution based on IoT (Internet of Things) technology.

It is the most integrated smart home solution in the market



© Well Shin All rights reserved.

Private Brand - PLUGO



Brand Spirit

As an innovator, we develop products with wide horizon. We not only change the application of power supply, but also provide you a whole new life style.

Main Products

Household power cord, travel adapter, AC/DC charger adapters, wireless router, smart home solution



© Well Shin All rights reserved.

Private Brand - Conntek



Brand Spirit

Power Your Life Smartly The leader in power connection field with the best products, solutions, efficiency and flexibility for you.

Main Products

RV Camp Power, Marine Shore Power, Construction Gen Power, Hospital Med Power, Trailer/ Truck Towing Power, Industrial, Home & Garden, Smart Gadgets, EV Green Power



© Well Shin All rights reserved.



© Well Shin All rights reserved.