



# Well Shin Technology

GO NOW



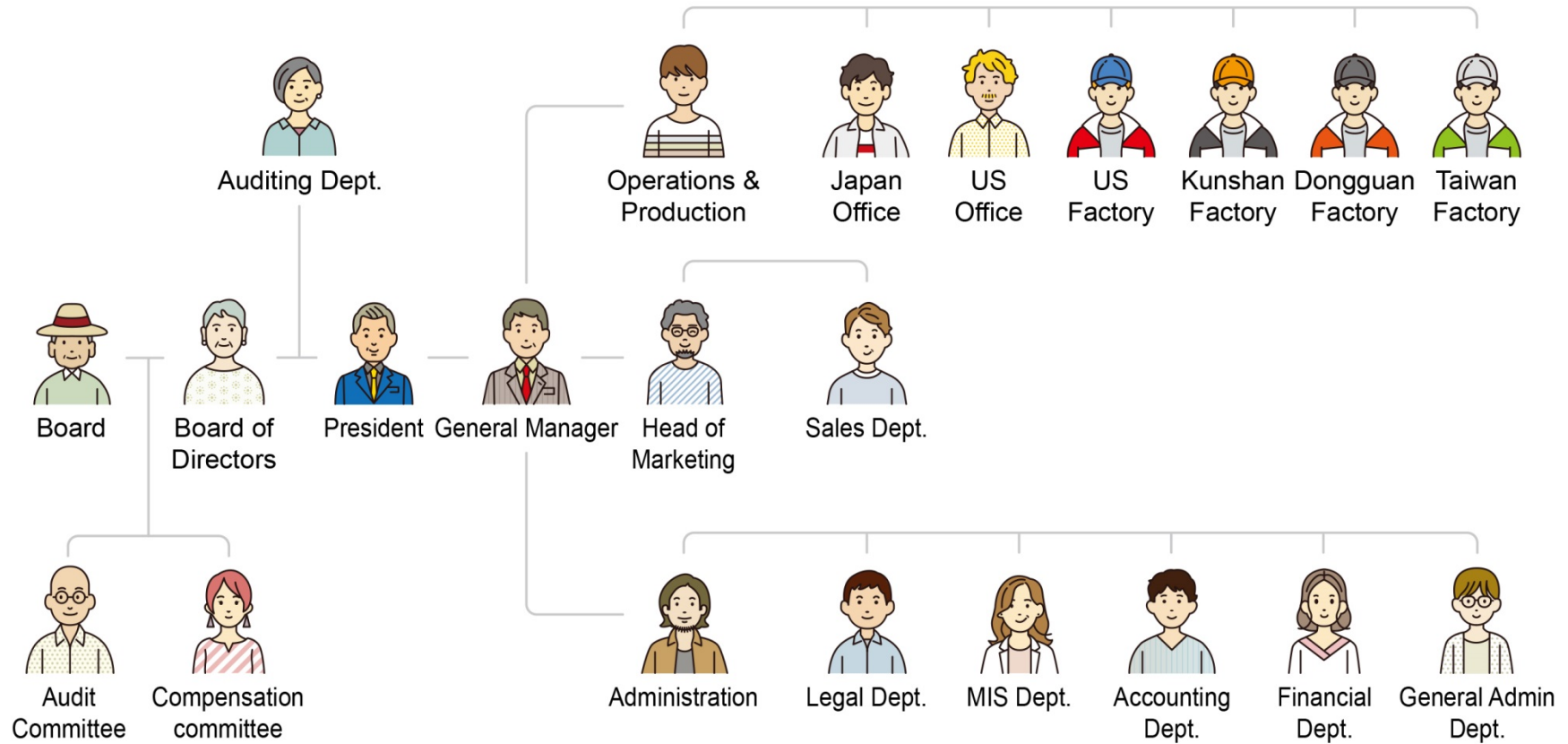
EV Charger 、 IoT Home Automation 、  
AC / DC Power Charger 、 AC Power Cordset

# Well Shin History

- |  |   |
|--|---|
| <u>2007</u> ▶ Well Shin published in Taiwan Stock Market (TSM : 3501)  | <u>2008</u> ▶ Well Shin Japan (ウェルシンツージャパン) established   |
| <u>2005</u> ▶ Conntek / Cisco / Well Shin Electric Kunshan established | <u>2011</u> ▶ Dongguan Plugo Electric (Plugo Private Brand) established   |
| <u>2003</u> ▶ Well Shin Electronic Kunshan established                 | <u>2013</u> ▶ Louisville Kentucky, USA production line established  |
| <u>2002</u> ▶ Enterprise reorganized into Well Shin Technology         | <u>2015</u> ▶ SmartBears and JDB Brand Series established   |
| <u>1999</u> ▶ Chang Hwa, Taiwan Factory established                    | <u>2023</u> ▶ WSIC established<br>GE Appliance recognition of Well Shin Technology<br>Excellent Performance in Quality 'Distinguished Supplier' |
| <u>1993</u> ▶ Dongguan Well Shin Factory established                   | <u>2024</u> ▶ Well Shin Electronic Vietnam established  |
| <u>1986</u> ▶ Well Shin Enterprise established                         | <u>2025</u> ▶ Well Shin Taiwan Taipei Factory established   |



# Organization Chart





# Business Philosophy



**Customer Satisfaction**



**Generating Profit for  
Shareholders and Increasing  
Tax Revenues**



**Harmony between Labor  
and Capital, Benefits Sharing**

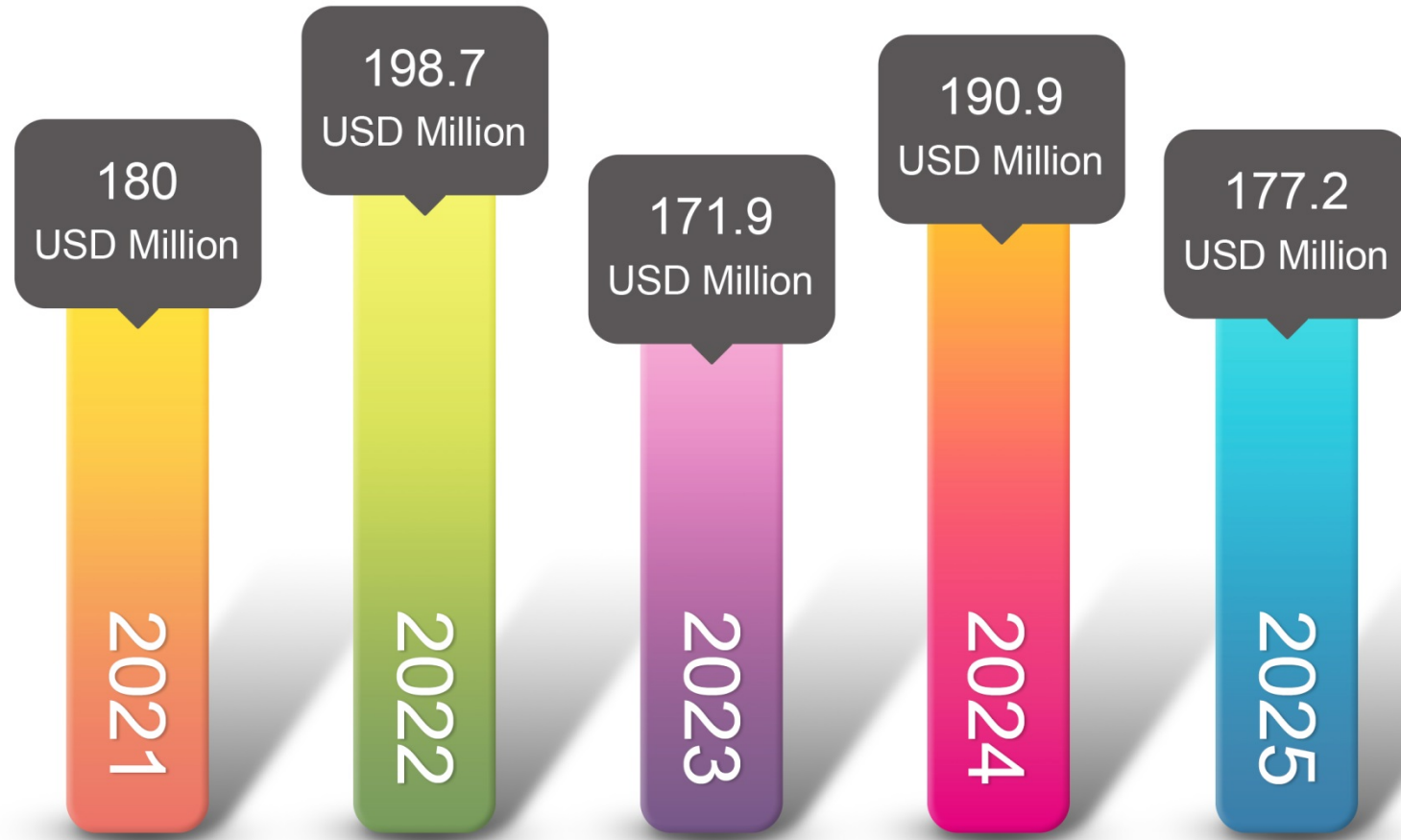


**The company abides by laws  
and regulations, fulfilling  
social responsibilities**





# Revenue



# Worldwide Location



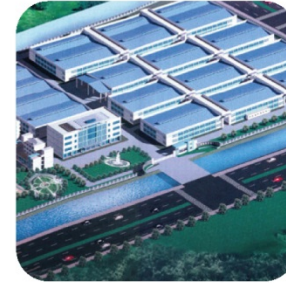
## Headquarter

Taipei, Taiwan  
Floor Area: 7,225m<sup>2</sup>  
Employees: 50



## Factory

Dong Guan, China  
Area: 77,731m<sup>2</sup>  
Production Lines: 84  
Employees: 750



## Factory

Kun Shan, China  
Area: 72,898m<sup>2</sup>  
Production Lines: 60  
Employees: 950



## Factory

Chang Hwa, Taiwan  
Area : 18,582m<sup>2</sup>  
Production Lines : 60 (Plan)  
Employees : 500 (Plan)



## Factory

Dallas Texas, USA  
Area: 4,638m<sup>2</sup>  
Production Lines: 7 (Plan)  
Employees: 70 (Plan)



## Factory

Da Nang, Vietnam  
Area : 18,382m<sup>2</sup>  
Production Lines: 47 (Plan)  
Employees : 500 (Plan)



## Factory

Taipei, Taiwan  
Area : 3,532m<sup>2</sup>  
Production Lines: 7 (Plan)  
Employees : 100 (Plan)

Office : Taipei, Dongguan, Kunshan, Japan, Da Nang, Dallas (TX), Milwaukee(WI), Tennessee (TN)

Hub : Milwaukee (WI), Franklin (WI), Indiana (IN)

Co-Partner : Quail



© Well Shin All rights reserved.

# Major Industrial Production and Processing



AC/DC Power IoT Product



Wire & Cable Production



Cable Assembling



Tooling Development



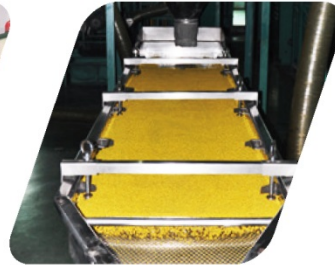
Hardware Stamping



Injection Molding



Rubber Kneading



PVC Pellet



Custom Design



Quality Control Capability



Approval & Management Capability



Service / Supply Capability



Vertical Integration



R&D Capability



Product Variety

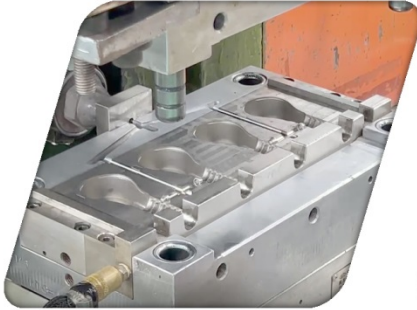


© Well Shin All rights reserved.

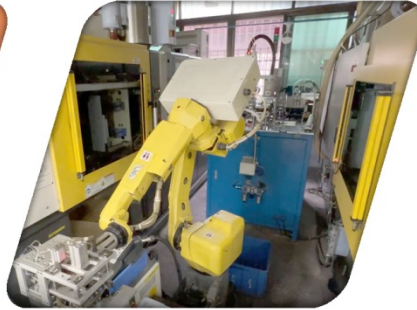


# Vertical Integration of Inhouse Material Supply

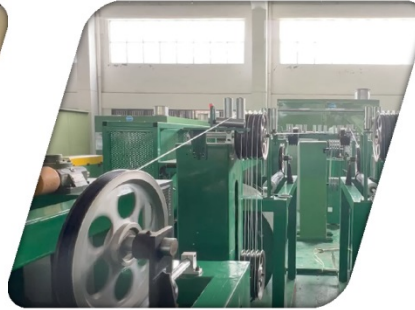
Tooling Supply



Plastic Injection Parts



Cable Production



Wire Parts



Metal Stamping Parts



TPE HF Pellet



PVC Pellet



Rubber Sheet



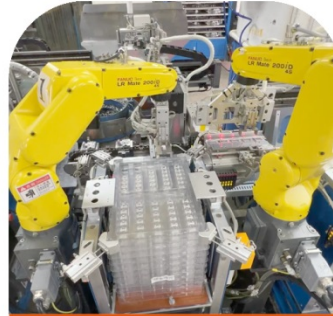
# Production Line



Plastic Injection



Parts



Automated production  
line for AC Adapter



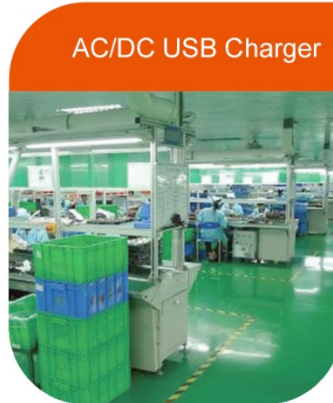
Car Charger



Automated production  
line for AC Cord Set



Electronic Product



AC/DC USB Charger



Wiring Harness Assembly





# Quality Policy

Well Shin obtained the ISO 9001, ISO / IATF16949 quality management in line with the company's business philosophy. Through the internal quality control and great service to meet customer satisfaction.

Meet the relevant requirements of ACT in line with

- Worldwide Safety Standards
- MSDS – Material Safety Data Sheet
- Quality Control Plan
- APQP – Advanced Product Quality Planning
- SPEC, SIP, SOP, Reliability Test
- 4P Management ( Design / Tooling / Pilot Run / Mass Production )





# Environmental Protection Policy

To meet the ISO 14001 Environmental Management requirements and RoHS, REACH standard in line with the company's business philosophy.



ICP-AES  
Measure the Concentration of Metal Ions.  
(Inductively Coupled Plasma with Atomic  
Emission Spectroscopy)



GCMS-QP2010  
Organic Material Analysis  
(Gas Chromatograph Mass Spectrometer)



XRF  
Toxic Heavy Metal Analysis  
(X-ray Fluorescence)



# Deed and Award



- ISO 27001 Information Security Management System Certification
- GE Appliance recognition of Well Shin Technology Excellent Performance in Quality 'Distinguished Supplier'
- Ranked No. 515 on CommonWealth Magazine list of Top 2000 Manufacturing 2023
- Certified to ISO/ IATF16949 Quality Management Systems for Automotive Industry
- Certified to ISO9001 Quality Management System (QMS)
- Certified to ISO14001 Environmental Management Systems (EMS)
- Be awarded the Safety Management Standards Certificate
- Interviewed by CCTV at Dongguan Factory about Production Automation.
- Signed a Memorandum of Understanding on joint R&D Program on Electric Vehicle W/ ITRI
- President JS WU - Be awarded the 2010 IIP (International Inventor Prize)
- Be awarded the GE Distinguished Supplier
- Be awarded the Special Tax Contribution
- Passed the Guangdong "Injection Molding Production Automation" evaluation
- Be awarded the Dongguan Top 100 Information Industry
- Be awarded the China High Technology Enterprises Certificate
- Obtained approved supplier code of HP and Thomson (Technicolor)



# Well Shin Products



**Infrastructures**



**Motor Vehicle**



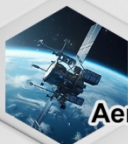
**Data Center**



**Industrial Equipments**



**Home Appliances**



**Aerospace**



**Consumer Electronic**



**Electric Vehicle Connector**

**IoT Home Automation**

**Locking Cord**

**Wiring Harness**

**(Automobiles, home appliances, new energy)**

**PDU Power Distribution Units**

**Power Adapter**

**Socket**

**AC/DC USB Charger**

**CLA**

**AC Power Cord Set**

**Hardware & Terminal**

**PVC/ Rubber/ HF Cable**

**Transportation Connector**



© Well Shin All rights reserved.



# Private Brand - SmartBears



Smartbears is a Smart Home solution based on IoT (Internet of Things) technology.

It is the most integrated smart home solution in the market



© Well Shin All rights reserved.

# Private Brand - PLUGO



## Brand Spirit

As an innovator, we develop products with wide horizon. We not only change the application of power supply, but also provide you a whole new life style.

## Main Products

Household power cord, travel adapter, AC/DC charger adapters, wireless router, smart home solution



© Well Shin All rights reserved.



# Private Brand - Conntek



## Brand Spirit

Power Your Life Smartly The leader in power connection field with the best products, solutions, efficiency and flexibility for you.

## Main Products

RV Camp Power, Marine Shore Power, Construction Gen Power, Hospital Med Power, Trailer/ Truck Towing Power, Industrial, Home & Garden, Smart Gadgets, EV Green Power



© Well Shin All rights reserved.





© Well Shin All rights reserved.